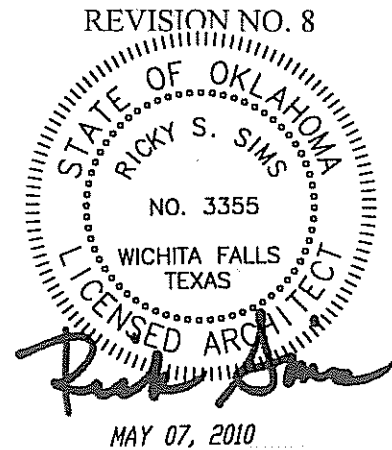


May 7, 2010

**STONEGATE SENIOR CARE
TULSA NURSING AND REHABILITATION CENTER**

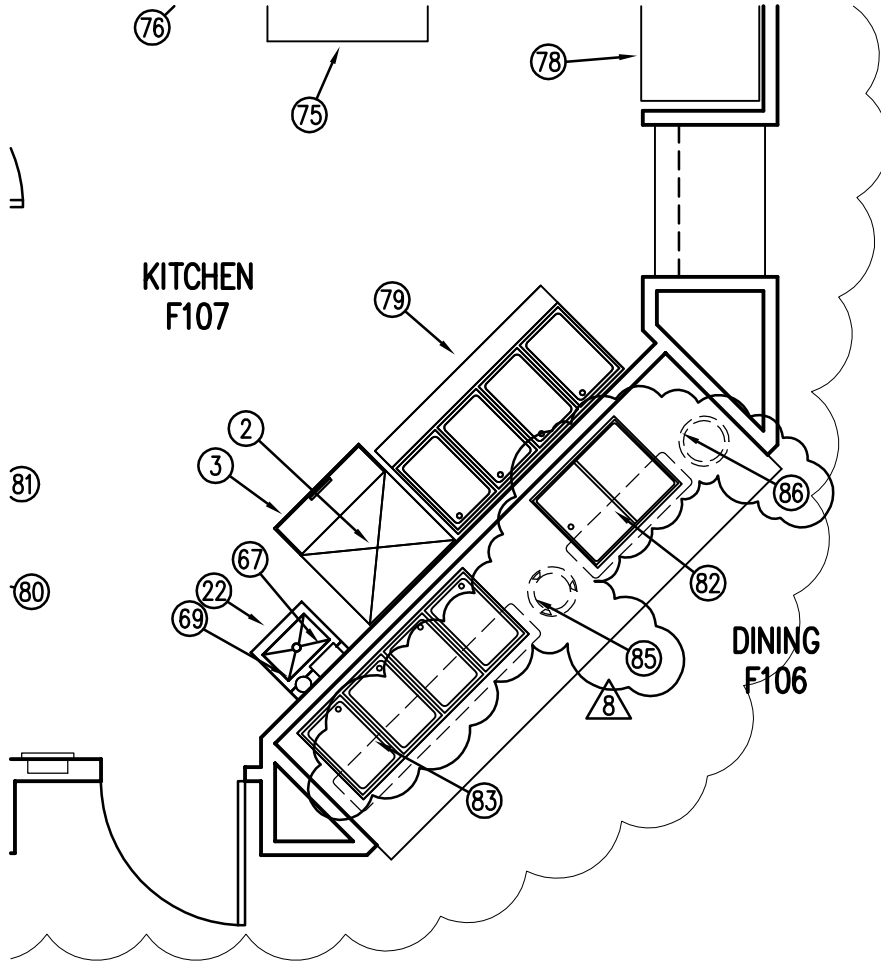
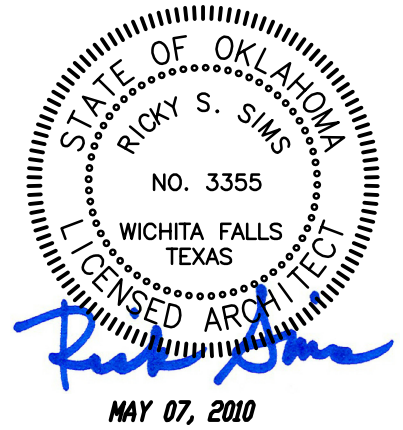


BYSP PROJECT NO. 07089

TO: Arthur Construction Company, Inc., StoneGate Development. Please make note of the following changes associated with REVISION NO. 8.

1. Sheet A113: At Kitchen Equipment Legend, change Equipment #8 to #26 and vice versa.
2. Sheet A113: At Kitchen Equipment Legend (Equip. #34): Change the quantity to (1) in lieu of (2) as shown.
3. Sheet A113: At Kitchen Equipment Legend (Equip. #83): Change the quantity to (1) in lieu of (4) as shown.
4. Sheet A113: At Kitchen Equipment Legend (Equip. #83): The hot food wells shall have a sneeze guard included.
5. Sheet A113: At Kitchen Equipment Legend: Add Item #85 – (1) PLATE WARMER – Furnished and installed by food service equipment contractor.
6. Sheet A113: At Kitchen Equipment Legend: Add Item #86 – (1) SOUP WELL – Furnished and installed by food service equipment contractor.
7. Sheet A113.1: At 3/A113: Revise Kitchen Plan as shown on attached sheet.
8. Sheet P205.02: In lieu of discharging Sump Pump in Elevator Shaft to a 55 Gallon Drum, discharge into a Floor Sink as shown on the attached sheet.
9. Sheet P402.02: At Detail 11 (Elevator Sump Pump), revise note as shown on attached sheet.
10. Sheet P402: Remove Detail 12 (55 Gallon Drum discharge drum from Elevator Sump Pump).
11. Sheet E202.1: The Electrical Power Plan was mistakenly laid out over an old base plan. Therefore the outlets, etc. had to be rearranged in order to line up with the current base plan (which has an added whirlpool tub). A new outlet was added so that both whirlpool tubs will be serviced in BATHING C133. See attached sheet. This revision supersedes Supplemental Instruction #1.
12. Sheet E703.1: A new circuit was added to LC1 so that both whirlpool tubs will be serviced in BATHING C133. See attached sheet. This revision supersedes Supplemental Instruction #1.
13. Sheet E402.1: Revise Electrical Service to Serving Kitchen as shown on attached sheet.
14. Sheet E701.1: Revise Electrical Panel 'K2' as shown on attached sheet.

End of Revision 8



PARTIAL FLOOR PLAN AREA F

SCALE: 1/8" = 1'-0"

 05/07/10 ENLARGED PORCH

COPYRIGHT 2010 BUNDY, YOUNG, SIMS & POTTER, Inc.

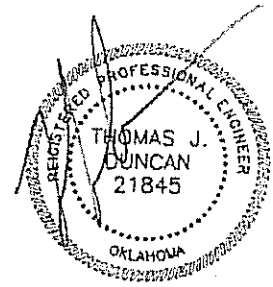
BUNDY, YOUNG, SIMS & POTTER, INC.
 ARCHITECTS/PLANNERS/INTERIOR DESIGN

1005 Ninth St. - Suite 200
 Wichita Falls, TX 76301
 Tel. (940)761-2404
 Fax (940)761-2119 E-mail: bysp@bysp.com

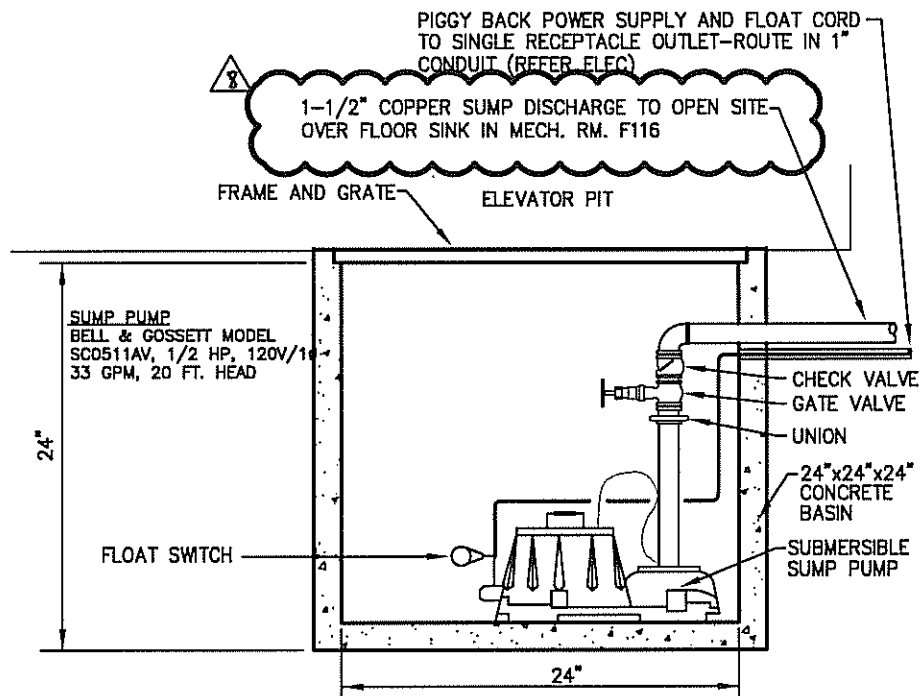
A NEW SENIOR LIVING FACILITY FOR: JOB NO. 07089
STONEGATE SENIOR CARE DATE 04/16/10

TULSA OKLAHOMA DRAWING NO. A113.1

Dick Bundy, AIA Tom Young, AIA(1949-1993) Rick Sims, AIA David Potter, AIA



5-7-10



ELEVATOR SUMP 11 PUMP DETAIL

NOT TO SCALE

DETAIL 12/ELEVATOR SUMP PUMP CONTAINER DELETED

COPYRIGHT 2010 BUNDY, YOUNG, SIMS & POTTER, Inc.



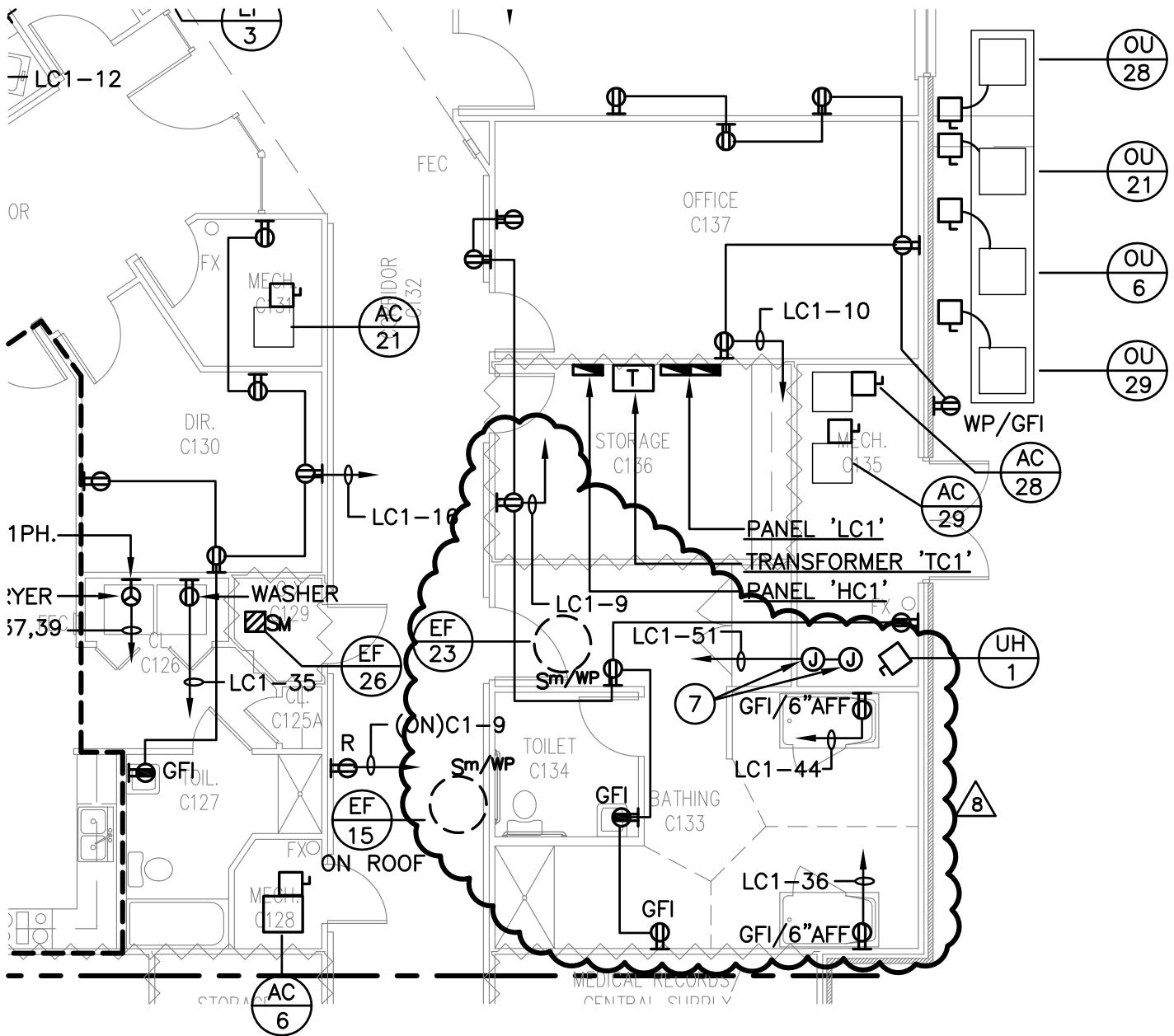
BUNDY, YOUNG, SIMS & POTTER, INC.
ARCHITECTS/PLANNERS/INTERIOR DESIGN

1005 Ninth St. - Suite 200
Wichita Falls, TX 76301
Tel. (940)781-2404
Fax (940)781-2119 E-mail: bysp@bysp.com

Dick Bundy, AIA Tom Young, AIA(1948-1993) Rick Sims, AIA David Potter, AIA

A NEW SENIOR LIVING FACILITY FOR
STONE GATE SENIOR LIVING
TULSA, OKLAHOMA

JOB NO. RAI #7077
DATE 4/16/10
DRAWING NO. P402.02



COPYRIGHT 2006 BUNDY, YOUNG, SIMS & POTTER, Inc.

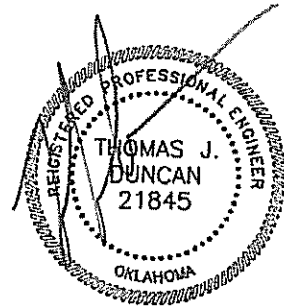
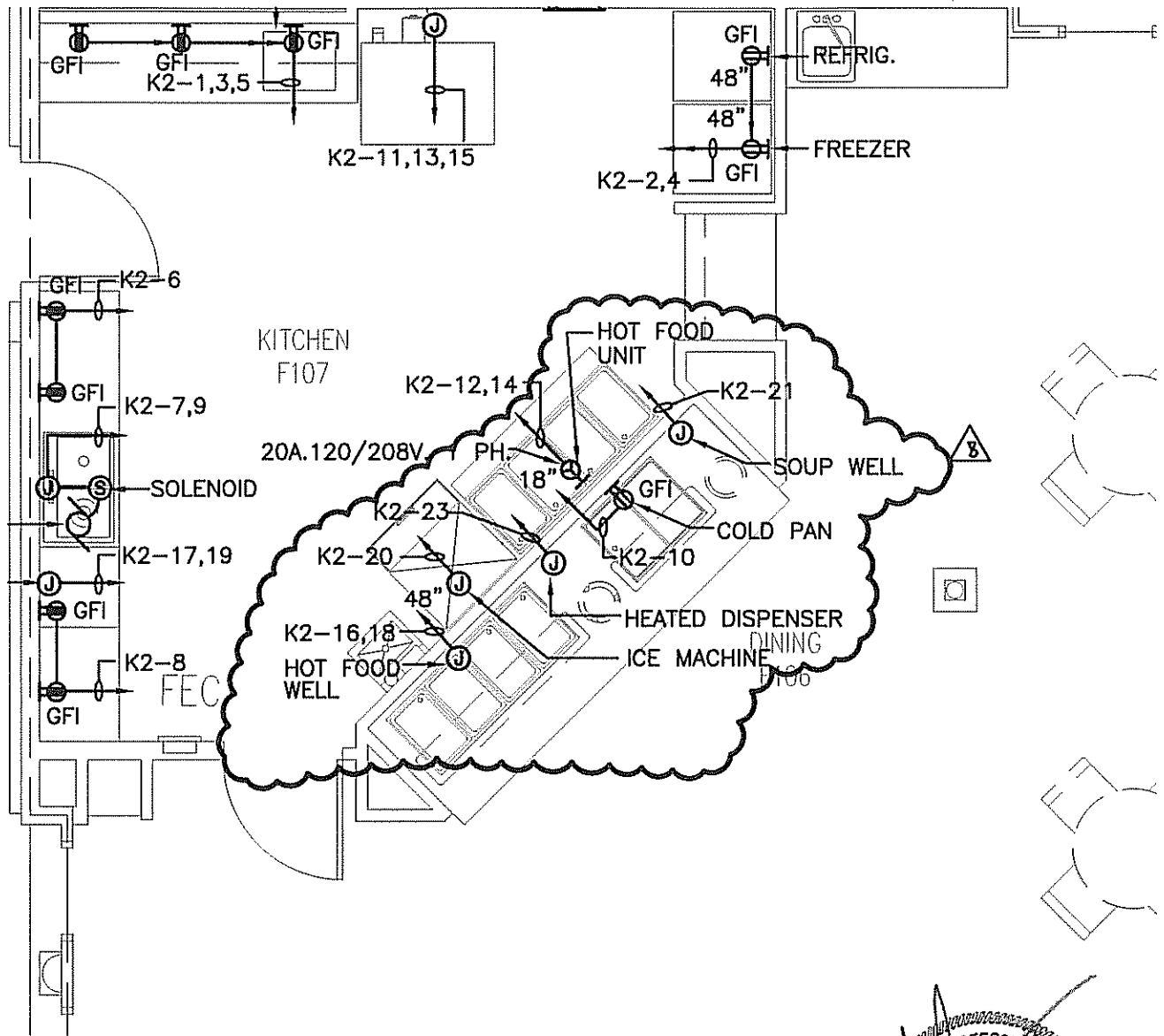


BUNDY, YOUNG, SIMS & POTTER, INC.
 ARCHITECTS/PLANNERS/INTERIOR DESIGN

1005 Ninth St.- Suite 200
 Wichita Falls, TX 76301
 Tel. (940)761-2404
 Fax (940)761-2119 E-mail: bysp@bysp.com

JOB NO. RAI #7077
 DATE 5/7/10
 DRAWING NO. E202.1

Dick Bundy,AIA Tom Young,AIA(1949-1993) Rick Sims,AIA David Potter,AIA



5-7-10

COPYRIGHT 2006 BUNDY, YOUNG, SIMS & POTTER, Inc.



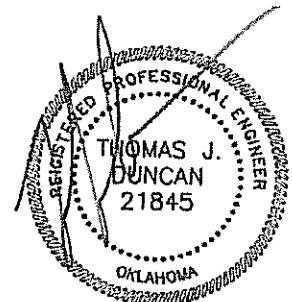
BUNDY, YOUNG, SIMS & POTTER, INC.
 ARCHITECTS/PLANNERS/INTERIOR DESIGN

1005 Ninth St - Suite 200
 Wichita Falls, TX 76301
 Tel. (940)781-2404
 Fax (940)781-2119 E-mail: bysp@bysp.com

Dick Bundy, AIA Tom Young, AIA(1949-1993) Rick Sims, AIA David Potter, AIA

JOB NO. RAI #7077
 DATE 4/16/10
 DRAWING NO. E402.1

PANEL 'K2'												
VOLTS: 120/208 3PH. 4W.						MAIN: LUGS ONLY						
MOUNTING: FLUSH						BUS: 225 AMP						
SERVES	CIR NO.	CONN LOAD	WIRE SIZE	COND SIZE	BRKR SIZE	PH	BRKR SIZE	COND SIZE	WIRE SIZE	CONN LOAD	CIR NO.	SERVES
MICROWAVE	1	1000	*	*	20/1	A	20/1	*	*	1200	2	FREEZER
TOASTER RECEPT.	3	900	*	*	20/1	B	20/1	*	*	900	4	REFRIGERATOR
TOASTER RECEPT.	5	900	*	*	20/1	C	20/1	*	*	1200	6	RECEPTACLES
DISPOSAL	7	850	*	*	15/2	A	20/1	*	*	1200	8	RECEPTACLES
(--)	9	850	*	*	--	B	20/1	*	*	500	10	COLD PAN
CONV. OVEN	11	4200	***	***	50/3	C	30/2	**	**	1500	12	HOT FOOD UNIT
(--)	13	4200	***	--	--	A	--	--	--	1500	14	(--)
(--)	15	4200	***	--	--	B	40/2	***	***	3200	16	HOT FOOD WELL
DISH MACHINE	17	3921	***	***	60/2	C	--	--	***	3200	18	(--)
(--)	19	3921	***	***	--	A	20/1	--	--	1500	20	ICE MACHINE
SOUP WELL	21	800	*	*	20/1	B	20/1	*	*	--	22	SPARE
HEATED DISH DISP.	23	380	*	*	20/1	C	--	--	--	--	24	SPACE
SPACE	25	--	--	--	--	A	--	--	--	--	26	SPACE
SPACE	27	--	--	--	--	B	--	--	--	--	28	SPACE
SPACE	29	--	--	--	--	C	--	--	--	--	30	SPACE



5-7-10

COPYRIGHT 2006 BUNDY, YOUNG, SIMS & POTTER, Inc.



BUNDY, YOUNG, SIMS & POTTER, INC.
 ARCHITECTS/PLANNERS/INTERIOR DESIGN

1005 Ninth St. - Suite 200
 Wichita Falls, TX 76301
 Tel. (940)781-2404
 Fax (940)781-2119 E-mail: bysp@bysp.com

Dick Bundy, AIA Tom Young, AIA(1940-1993) Rick Sims, AIA David Potter, AIA

JOB NO. RAI #7077
 DATE 4/16/10
 DRAWING NO. E701.1

PANEL 'LC1'

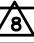
VOLTS: 120/208 3PH. 4W.

MAIN: LUGS ONLY

SECTION 2

MOUNTING: SURFACE

BUS: 225 AMP

SERVES	CIR NO.	CONN LOAD	WIRE SIZE	COND SIZE	BRKR SIZE	PH	BRKR SIZE	COND SIZE	WIRE SIZE	CONN LOAD	CIR NO.	SERVES
BATH/FEED/REC. LTG.	31	1221	*	*	20/1	A	20/1	*	*	1319	32	OFFICE/DIN./CONF. LTG.
SPARE	33	-	-	-	20/1	B	20/1	*	*	800	34	EF-15&23
WASHER	35	1200	*	*	20/1	C	20/1	*	*	800	36	SPA
DRYER	37	2500	**	**	30/2	A	20/1	*	*	450	38	TRACK LTG.
(--)	39	2500	**	-	-	B	40/2	***	***	3250	40	COOKTOP
REF. RECEPTACLE	41	800	*	*	20/1	C	-	-	***	3250	42	(--)
SPARE	43	-	-	-	20/1	A	20/1	*	*	800	44	SPA 
SPARE	45	-	-	-	20/1	B	20/1	-	-	-	46	SPARE
SPARE	47	-	-	-	20/1	C	20/1	-	-	-	48	SPARE
SPARE	49	-	-	-	20/1	A	20/1	-	-	-	50	SPARE
WATER HEATER/CIRC. PUMP	51	400	*	*	20/1	B	20/1	*	*	1800	52	DW/DISP.
EF-24	53	200	*	*	20/1	C	20/1	*	*	600	54	RECEPTACLE
SPARE	55	-	-	-	20/1	A	20/1	-	-	-	56	SPARE
SPARE	57	-	-	-	20/1	B	20/1	-	-	-	58	SPACE
SPARE	59	-	-	-	20/1	C	20/1	-	-	-	60	SPACE



5-7-10

COPYRIGHT 2006 BUNDY, YOUNG, SIMS & POTTER, Inc.



BUNDY, YOUNG, SIMS & POTTER, INC.
ARCHITECTS/PLANNERS/INTERIOR DESIGN

1005 Ninth St.- Suite 200
Wichita Falls, TX 76301
Tel. (940)761-2404
Fax (940)761-2119 E-mail: bysp@bysp.com

Dick Bundy,AIA Tom Young,AIA(1949-1993) Rick Sims,AIA David Potter,AIA

JOB NO. RAI #7077

DATE 5/7/10

DRAWING NO. E703.1